

# *Garden Houses*

*Outdoor Joys—Indoor Comfort*





THE KISS OF THE SUN FOR PARDON,

THE SONG OF THE BIRDS FOR MIRTH,

ONE IS NEARER GOD'S HEART IN A GARDEN

THAN ANYWHERE ELSE ON EARTH.

*~Dorothy Frances Gurney*

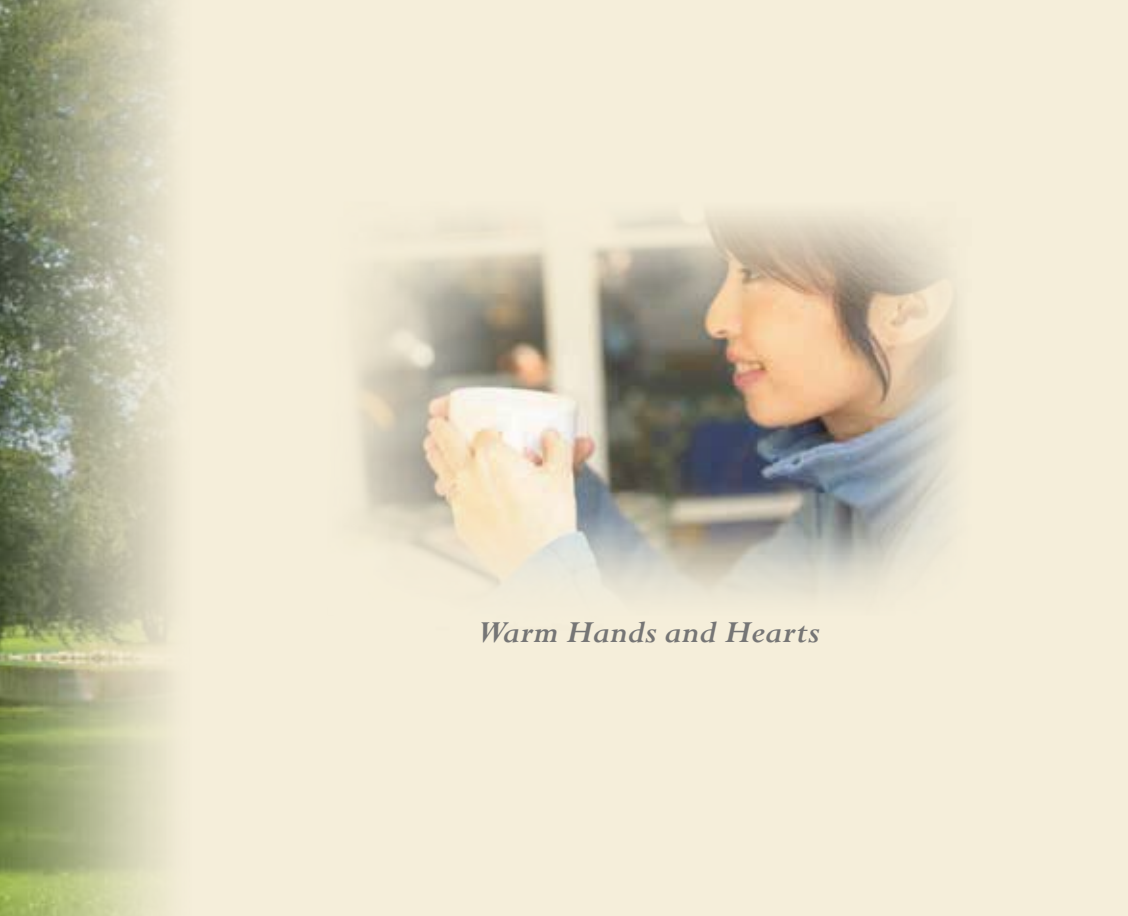
## *Oval Garden House*



### *Solid Wall Panels*



- Completely Clad with Industry Leading Synthetic Boards
- Hand Built
- Tongue and Groove Boards
- Stylish Panel Design
- Reinforced with Sturdy 4 x 4 pressure treated columns



## *Warm Hands and Hearts*

## *High Performance Windows*



- Child Safe, Tempered Safety Glass
- Thermo-pane
- Hidden Grill for Easy Cleaning
- Exceeds Town Code Requirements



## *Rectangular Garden House*



### *A Beautiful Roof*



- 25 Year Architectural Shingles
- Heavy 2 x 6 Rafters
- Beautiful 1 x 6 Tongue and Groove Underlay Visible in the Cathedral Ceiling



*Celebrate ... Share ... Dream*

*Optional Ceiling Fans For Comfort & Style*



*Octagon Garden House*



*Not Just a Roof*



Top Off Your  
Garden House with a Cupola.





*Make Time to Play*

*Heavy Duty Door*



Well Built Entrance Door  
for Years of Smooth Operation

## Ceiling Options

We call the boards that form the ceiling and roof deck “underlay.” The underlay consists of tongue and groove boards to make construction as durable as it is beautiful.

Cedar

Pressure Treated

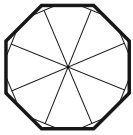


## Specifications

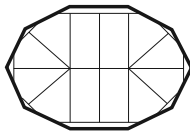
- Windows: Thermo Pane, Hidden Grill, Tempered Safety Glass
- Pressure Treated Under Structure
- Vinyl Clad 4 x 4 Pressure Treated Wall Structure
- Perma Trim Panels and Trim
- Azek Deck Flooring

## Floor Plans

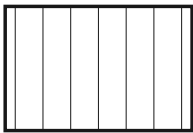
Garden Houses are built in four floor plans.



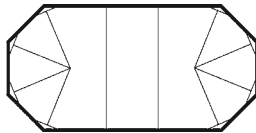
Octagon



Standard Oval



Rectangle



Oval

## Exterior Colors

Ivory

White



## Architectural Asphalt Shingles



Black



Weathered Wood



Earth Tone Cedar



Driftwood

## *Flooring*

We use only the best low maintenance decking materials. Because decking material technology is developing so fast, and new colors and textures are constantly being introduced, please contact your dealer for the decking choices now available.

## *Roof Options*

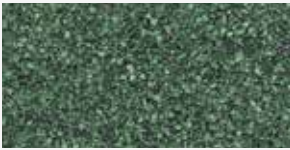
The roof covering has a big effect on the visual presentation of your Garden House. Select from Architectural Asphalt Shingles, and Slate-look Composite. The new Slate-look Composite material has a dimensional appearance and adds that extra something to set your lifestyle apart.



## *Slate-look Composite*



*Cedar Brown*



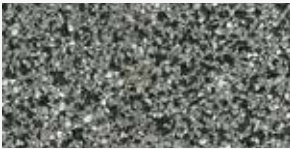
*Forest Green*



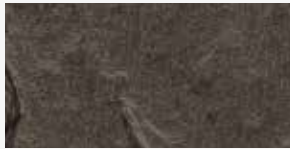
*Grey*



*Earth Green*



*Dual Gray*



*Chestnut Brown*



*Stone Red*



*Dual Brown*

*Rectangular Pool House with Screened Porch*



*Corner Brace Styles*

*Standard Brace*



*Deluxe Brace*



*Heritage Brace*





*Cool Fun*

*Railing Styles*

*1" x 3"  
Balusters*



*2" x 2"  
Balusters*



*2" x 2"  
Turned Spindles*



*2" x 3"  
Turned Spindles*







*Rectangular Wooden  
Pool House with Porch*

*There's Something About Water ...*





*Outdoor Joys—Indoor Comfort*

*Your Authorized Garden House Dealer:*

